

Guidebook for Agents & Prep Providers

*CAEL CE is the leading academic
English proficiency test for study in Canada*



CAEL[®]

Table of Contents

About Us	3
Why Choose CAEL CE	4
Testing in Canada & Around the World	5
Test Day Checklist	6
CAEL CE Test Format	7
CAEL CE Components	8
CAEL CE Testimonials	10
CAEL CE Band Scores	11
Accepting Institutions	12
How to Register for CAEL CE Online	14
How Test Takers Access CAEL CE Test Results	15
CAEL CE Study Plans	16
Official CAEL CE Study Materials	17
How we Work with our Partners	18
Contact Us	20

About Us

Paragon Testing Enterprises, founded in 2009, currently operates 80+ test centres worldwide

Paragon currently administers three tests:

- The Canadian English Language Proficiency Index Program (CELPIP) Test
- The Canadian Academic English Language Test, Computer Edition (CAEL CE)
- The Language Proficiency Index (LPI) Test

Paragon's mission is to make its English language proficiency tests the tests of choice for those wishing to immigrate to Canada, become Canadian citizens, or study in Canada at all levels. To achieve this mission, Paragon conducts ongoing test research in collaboration with internationally recognized scholars at Canada's leading universities. This test research program ensures the highest quality tests and enables Paragon to compete with large international testing agencies.

In 2015, Paragon purchased the CAEL Assessment from Carleton University, and in 2017, successfully converted the test to a computer-delivered version known as CAEL CE (Computer Edition). Paragon is currently focused on the international expansion of its tests, with recently opened test centres in the United Arab Emirates, the United States of America, India, and the Philippines, with additional test centres set to open in China and Vietnam in 2019.

Why Choose CAEL CE

CAEL CE is the only test that provides an authentic representation of language use in a Canadian academic context. It evaluates how well students combine their English speaking, reading, listening, and writing skills to perform academic tasks that they would encounter at a Canadian university or college.

Test Features



Acceptance Across Canada

Accepted by over 180 Canadian universities and colleges, including all of the English U15 institutions



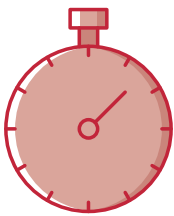
Quick Online Results

Available online in 8 business days, sent to 5 institutions at no extra cost



Computer-delivered Test

Includes features such as a personal timer & word counter



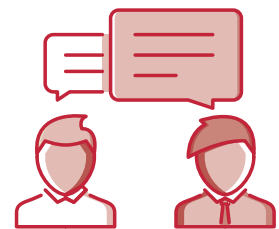
Single Test Sitting

Taken in a single 3-hour sitting with no separate Speaking test



Convenient Study Materials

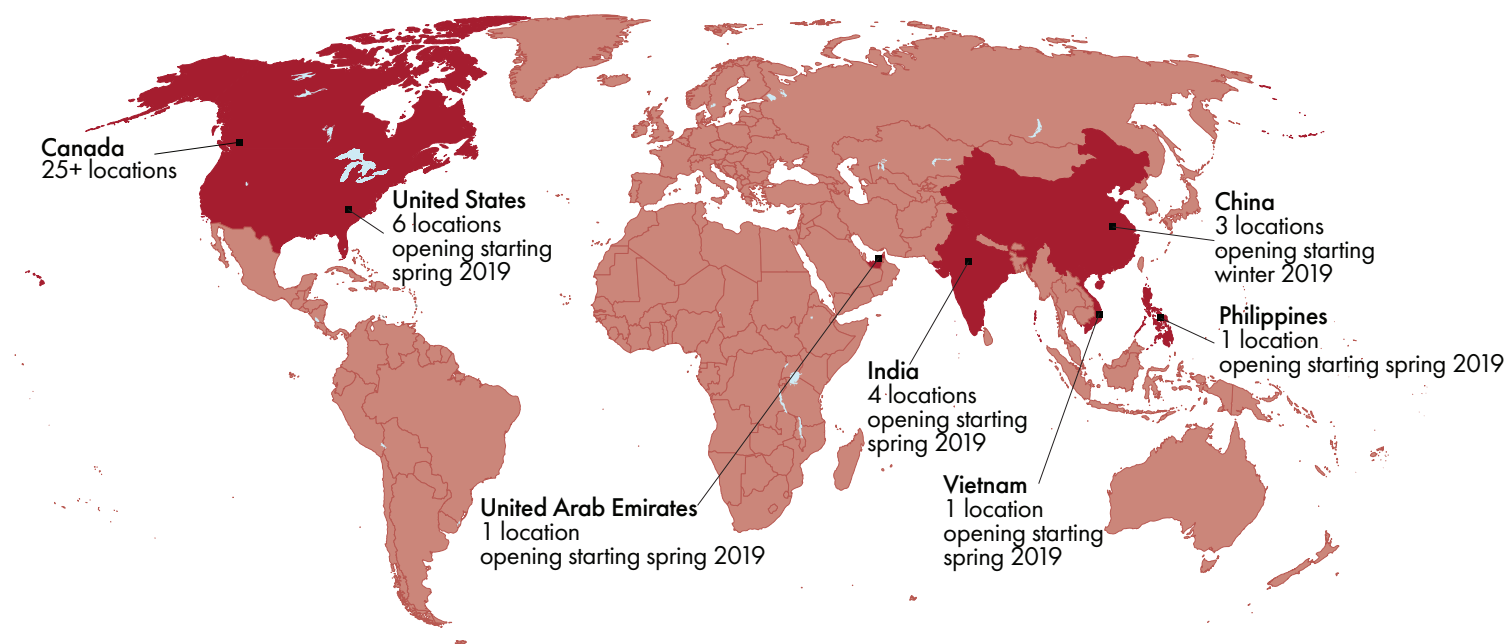
Free sample tests, pretest sittings, webinars, prep programs & online courses



Single North American Accent

Easy-to-understand English and vocabulary taken from everyday situations

Testing in Canada & Around the World



Test Fees & Frequency in Canada

\$280
+ Taxes

Test sittings are available twice monthly in Canada, with monthly test sessions in all cities.

Free
Practice

CAEL CE Pretest

A free opportunity to experience questions on the CAEL CE Test, but cannot be used to verify your English proficiency. It is completed in less time than the full CAEL.

International Fees

International test fees may vary. For a complete listing of upcoming test sittings and test fees, visit cael.ca. CAEL pretesting is not yet available internationally.

Test Day Checklist

Don't forget about these requirements:

- Bring your ID**
The identification you bring on test day must be the same identification you used to register for the CAEL CE Test. Your ID must also be valid and unexpired.
- Bring a copy of your registration email**
You can bring a print or digital version of your test registration email.
- Arrive 45 minutes early**
Latecomers will be denied entrance to the test and will not receive a refund or a transfer to another CAEL CE Test sitting.
- Go to the washroom before check-in**
There are no washroom breaks during your CAEL CE Test.
- Do not bring any items into the test**
You will have to store all personal belongings in a personal property bag or locker at the test centre prior to entering the CAEL CE Test sitting.

For a full set of rules, visit cael.ca/cael-ce-test-day-information

CAEL CE Test Format

CAEL CE assesses English language proficiency in an academic context. Test takers receive scores for the Speaking, Listening, Reading, and Writing components, as well as an overall score.

The test includes activities that students engage in during post-secondary study. The topics and tasks in the test are taken from first-year university courses. Some of these tasks will require test takers to use what they have read and listened to in order to answer a question by speaking or writing their response.

CAEL CE is fully computer delivered, providing test takers the opportunity to complete all test components in one sitting.

The total test time for CAEL CE is approximately 3.5 hours, and the test fee is \$268 CAD + tax (international test fees may vary).

Speaking

Reply to on-screen prompts verbally

7-10 minutes

Integrated Reading

Read passages and reply to questions

35-50 minutes

Integrated Listening

Listen to passages and reply to questions

25-35 minutes

Academic Unit A

Answer comprehension questions and write a reply

60-70 minutes

Academic Unit B

Answer comprehension questions and write a reply

40-45 minutes

CAEL CE Components

Part 1: Speaking

In Part 1, there are three Speaking tasks, each on a different topic:

- ✔ Task 1 & 2: Test takers will discuss various aspects of educational plans or experiences, describe and draw conclusions about an information graphic, and discuss other topics applicable to academic study.
- ✔ Task 3: Speaking tasks will relate directly to a Reading passage and a lecture. Test taker's responses will demonstrate their understanding of the passage or lecture.

Test takers' responses to Part 1 speaking questions are evaluated on the content of their response, the accuracy of their language, and their ability to reference details in a visual image (if present).

Part 2: Integrated Reading

In Part 2, there are two types of reading passages, each followed by a set of comprehension questions. The passages resemble the types of texts students might encounter during their first year at a college or university. The comprehension questions assess test takers' abilities to:

- ✔ Comprehend the general meaning of a passage
- ✔ Identify specific information in the passage
- ✔ Make inferences based on information in the passage

In the final task of Part 2, test takers respond to one speaking question that is answered using material from one of the reading passages.

Test takers' responses to the reading comprehension questions are scored as correct or incorrect. Test takers' spoken responses are evaluated on the content of their response, the accuracy of their language, and their use of source material.

CAEL CE Components

Part 3: Integrated Listening

In Part 3, there are two types of listening passages, each followed by a set of comprehension questions. The content of the listening passages resemble the types of lectures, orientation activities, or academic event announcements students might encounter during their first year at a college or university. The comprehension questions assess test takers' abilities to:

- ✔ Comprehend the general meaning of a passage
- ✔ Identify specific information in the passage
- ✔ Make inferences based on information in the passage

In the final task of Part 3, test takers respond to one speaking question that is answered using material from one of the listening passages.

Test takers' responses to the listening comprehension questions are scored as correct or incorrect. Test takers' spoken responses are evaluated on the content of their response, the accuracy of their language, and their use of source material.

Part 4: Academic Unit A

There are three sections in Part 4, each of which is about an aspect of the same academic topic:

- ✔ One reading passage with comprehension questions
- ✔ One listening passage on the same topic, with comprehension questions
- ✔ One writing question requiring an extended response, using material from both the reading passage and the listening passage.

Part 5: Academic Unit B

There are three sections in Part 5, each of which is about an aspect of the same academic topic. The topic in Part 5 is different than the topic test takers encounter in Part 4.

- ✔ One reading passage with comprehension questions
- ✔ One listening passage with comprehension questions
- ✔ One writing question requiring a short response, using material from the reading passage or the listening passage.

CAEL CE Testimonials

From Canadian institutions:

"We chose CAEL because it contains, and expects students to produce the actual academic language of the university community. This validity was crucial in our decision."

Robert Berman, University of Alberta

"We have consistently found the test to be a much more accurate instrument for predicting academic success than the other tests available."

Louis Buchanan, Ryerson University

From our test takers:

"I appreciated the availability of test dates for CAEL, and found it convenient and inexpensive compared to other English proficiency tests."

Aashima, CAEL CE Test Taker

"What I liked most about the CAEL CE was that you can do the test on the computer, it uses Canadian English, and the results are released quickly!"

Alinsson, CAEL CE Test Taker

CAEL CE Band Scores

After completing the CAEL CE Test, test takers receive a score report that details individual English proficiency scores for the Speaking, Reading, Listening, and Writing components as well as an overall score. CAEL CE scores are reported on a scale from 10 to 90, with accompanying descriptors of what this performance represents. The overall score is calculated as an equally weighted average of the four component scores rounded to the nearest ten-point interval.

CAEL CE Score	CAEL CE Band Descriptor
80–90	Expert: Demonstrates a high level of competence, accuracy, and effectiveness in academic/professional settings
70	Adept: Uses generally accurate language in most settings; some limitations in flexibility are evident
60	Advanced: Displays competence in academic or professional settings
50	High Intermediate: Exhibits some competence in academic or professional settings; communication may break down in places
40	Intermediate: Demonstrates some ability to comprehend and articulate complex ideas and arguments typical of academic or professional settings
30	High Beginner: Expresses basic ideas about familiar topics in routine settings
10–20	Low Beginner: Communicates with limited ability

Sample Score Requirements

Institution	Required Score
University of Manitoba	CAEL 60, IELTS 6.5
Western University	CAEL 60, IELTS 6.5
University of Toronto	CAEL 70, IELTS 6.5
McGill University	CAEL 70, IELTS 6.5
triOS College	CAEL 60, IELTS 6.0
George Brown College	CAEL 60, IELTS 6.0
Langara College	CAEL 60, IELTS 6.5
Southern Alberta Institute of Technology	CAEL 60, IELTS 6.0

Accepting Institutions

CAEL CE is accepted by over 180 institutions across Canada for academic admission, as well as by several professional organizations for certification.



CAEL CE is accepted by 100% of the English-speaking Universities Canada institutions that accept international students.



CAEL CE is accepted by 82% of the English-speaking CiCan institutions that accept international students.

Accepting institutions include:



Accepting Institutions

Acadia University
Ascenda School of Management
Alberta College of Art & Design
Alexander College
Algoma University
Algonquin College
Ambrose University
Ashton College
Assiniboine Community College
Athabasca University
Bishop's University
Bow Valley College
Brandon University
Brescia University College
Briercrest College and Seminary
Brighton College
British Columbia Institute of Technology
Brock University
Burman University
Campion College
Canadian Business College
Canadian College
Canadian College of Health Science and Technology
Canadian College of Naturopathic Medicine
Canadian Health Care Academy
Canadian Mennonite University
Canadore College
Cape Breton University
Capilano University
Carleton University
Carlton Trail College
Centennial College
Central Helicopter Training Academy
Coast Mountain College
College of New Caledonia
College of the Rockies
College of Veterinarians of British Columbia
College of Veterinarians of Ontario
Columbia College
Concordia University
Concordia University of Edmonton
Coquitlam College
Corpus Christi College
Crandall University
Cumberland College
Cypress College
Dalhousie University
Douglas College
Durham College
Eastern College
Emily Carr Institute of Art and Design
Fairleigh Dickinson University
Fanshawe College
First Nations University of Canada
Fleming College
Gateway College
George Brown College
Georgian College
Grandesco College
Great Lakes Helicopter Corp.
Great Plains College
Helicopters Canada – Flight Training School
Holland College
Horizon College & Seminary
Humber College
Huron at Western
IH Career College
Imperial Hotel Management College
Kemptville College
Keyano College
Keyin College
KLC College
Kwantlen Polytechnic University
Lakehead University
Lakeland College
Langara College
Laurentian University
Lethbridge College
Loyalist College
Luther College
MacEwan University
Makami College Inc.
Manitoba Institute of Trades and Technology
McGill University
McKenzie College School of Art & Design
McMaster University
Medicine Hat College
Memorial University of Newfoundland
Menno Simons College
Metropolitan Community College
Mohawk College
Mount Allison University
Mount Royal University
Mount Saint Vincent University
New Brunswick Community College
Newman Theological College
Niagara College
Nipissing University
NorQuest College
North Island College
North West College
Northern Alberta Institute of Technology
Northern Lakes College
Northern Lights College
Nova Scotia Community College
NSCAD University
OCAD University
Okanagan College
Olds College
Oulton College
Pacific Coast Community College
Pacific Coast University for Workplace Health Sciences
Parkland College
Pharma-Medical Science College of Canada
Portage College
Protege School
Queen's University
Red Deer College
Redeemer University College
Renison University College
Rhodes Wellness College
Royal Roads University
Ryerson University
Saint Elizabeth Health Career Colleges
Saint Mary's University
Saint Paul University
Saskatchewan Polytechnic
Saskatoon Business College Ltd.
Sault College
Selkirk College
Seneca College of Applied Arts and Technology
Simon Fraser University
Southeast College
Southern Alberta Institute of Technology
St. Clair College
St. Francis Xavier University
St. Jerome's University
St. Lawrence College
St. Mary's University
St. Peter's College
St. Stephen's College
St. Thomas Flight Centre
St. Thomas More College
St. Thomas University
Stanford International College of Business and Technology
The King's University College
Thompson Rivers University
Trent University
Trinity Western University
triOS College
UBC Vantage College
University of Alberta
University of British Columbia
University of Calgary
University of Guelph
University of King's College
University of Lethbridge
University of Manitoba
University of New Brunswick
University of Northern British Columbia
University of Ontario Institute of Technology
University of Ottawa
University of Prince Edward Island
University of Regina
University of Saskatchewan
University of St. Michael's College
University of Sudbury
University of the Fraser Valley
University of Toronto
University of Victoria
University of Waterloo
University of Windsor
University of Winnipeg
Vancouver Community College
Vancouver Island University
Victoria University
Western Community College
Western University
Western University - Ivey Business School
Westminster College
Wholistic Health Training & Research Centre
Wilfrid Laurier University
York University
Yorkville University

How to Register for CAEL CE Online

Registering for CAEL CE online is fast and easy:

1

Create a CAEL Account

Visit cael.ca and click on the "Sign In" link at the top of the page. This will take test takers to the account page, where they can create a CAEL account.

2

Sign into a CAEL Account

After creating a new CAEL account or signing into an existing account, test takers can register for a test.

3

Register for CAEL CE

During registration test takers select the country, region, and city in which they will take the CAEL CE Test. Test takers can then choose an available test centre and testing date.

4

Choose the identification to bring

Test takers can choose the type of personal identification that they will provide on test day from a list of acceptable identification choices.

5

Confirm information and payment option

Test takers can pay via credit card online, or submit a paper test registration form through the mail with an alternative form of payment.

How Test Takers Access CAEL CE Test Results

Test takers can easily access their CAEL CE results online. Test results are available in just 8 business days after the CAEL CE Test has been completed. For test takers applying to a number of institutions, CAEL CE results are sent directly to the institution, and test takers can select up to 5 institutions to receive their scores at no extra cost. With the CAEL CE Scores and Identity Verification System, institutions can directly verify test taker scores, ensuring the safe and accurate transmission of test taker scores to their institutions of choice.



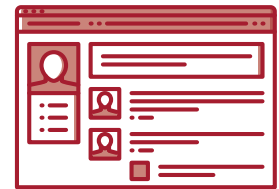
Direct to Institutions

Test takers select the organizations that will receive CAEL CE scores during test registration



Updates via Email

Test takers will receive test day confirmations and score results via email



Account Dashboard

Test takers can sign into their accounts at cael.ca to see their results

CAEL CE Study Plans

Self-directed

Workbooks

CAEL Skills Workbook

Textbooks

CAEL CE: An Overview

Online Study Programs

Academic Vocabulary Builder

CAEL Accelerate

Instructor-led

Webinars

CAEL CE Online Course

CAEL CE Writing and Speaking Workshop

Overview of CAEL CE

Preparation Programs

CAEL CE Preparation Program

Practice-based

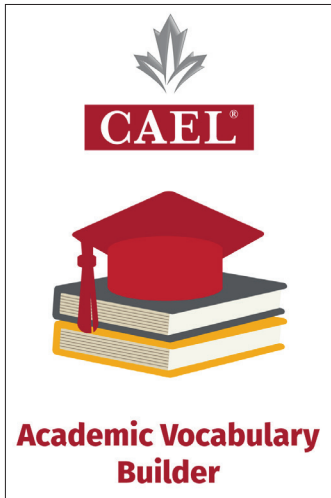
Free Sample Test

CAEL CE Sample Test

Practice Tests

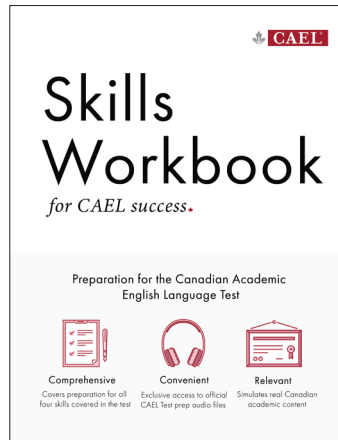
CAEL CE Online Practice Tests, 1-4

Official CAEL CE Study Materials



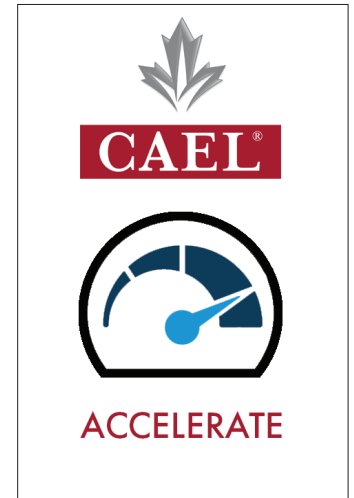
Academic Vocabulary Builder

A self-directed study program designed to boost academic word power



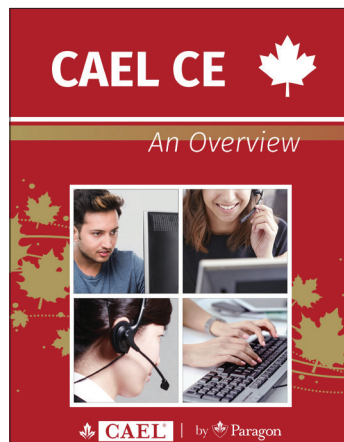
CAEL Skills Workbook

Provides activities and exercises to develop English skills and abilities



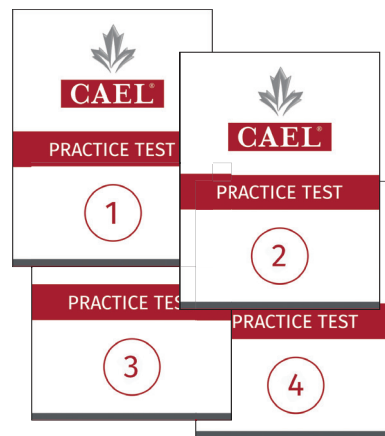
CAEL Accelerate

A self-directed study program with interactive quizzes, instructional videos, and more



CAEL CE: An Overview

This guide details what to expect on the CAEL Test, and includes study tips and strategies



CAEL CE Practice Tests

Complete practice test with a detailed answer key

How We Work with our Partners

For individuals and organizations looking for partnership benefits, Paragon is introducing the CAEL CE Network. This program will provide members with incentives for following business practices that align with Paragon values. The features of the tiered levels of the program include:

CAEL CE Network Tiers and Benefits

	Silver	Gold	Platinum
Recognition as a member of the CAEL CE Network at a given level	✓	✓	✓
Access to Paragon Branding / Marketing Materials	✓	✓	✓
Test taker registration and Affiliate privileges with commission	✓	✓	✓
Listing on Paragon website	✓	✓	Feature Page
Free practice test codes	25	50	100
Bulk discount on IPP materials **	15%	20%	25%
Ongoing instructor training **	✓	✓	✓
Discount on one live test with score per instructor **	50%	60%	75%

** Available benefits for preparation providers only

Application Process

In order to ensure all submissions are reviewed in a fair and timely manner, the following process has been created to apply for the CAEL CE Network:

- ✓ Fill out the application form
- ✓ Provide information requested paying close attention to contact details
- ✓ Applicants will be contacted by Paragon Staff for follow-up questions prior to approval
- ✓ Applicants will begin at the Silver partnership tier, and will be able to advance to higher tiers

Key Partner Benefits



Trusted & Convenient

Study materials can be directly purchased and placed in student accounts; they can never be lost or stolen



Printing Digital Materials

Each student can print a copy of their online study materials for their own use



Exclusive Pricing & Discounts

Study materials can be purchased in bulk quantities at vastly reduced prices



Inclusion & Networking

Members of the CAEL CE Network will be highlighted on our websites, and receive referral traffic



Leveraging Branding

Members can co-brand their materials with our logos, as well as with our exclusive Network Member badges



Referral Commission

Members can access our referral program, which provides materials to collect referral commission from test registrations

Admission Criteria

Paragon works closely with organizations around the world to ensure that our partners are of the highest quality, and are able to maintain test taker and stakeholder trust in our tests. Prior to joining the CAEL CE Network, all applicants must meet the following requirements:

- ✔ Provide a professional website and email address (no gmail or yahoo accounts will be accepted)
- ✔ Provide relevant accreditations, professional designations, or membership in business chambers, professional associations (such as RCIC, Languages Canada, ICCRC, etc.), and other accrediting bodies.
- ✔ Applicants who are looking to provide a preparation program must participate in Instructor Training

Network Ecosystem

As an essential component of our customer ecosystem, members contribute key services to our clients, and are a valuable link between test takers and their goals for studying abroad.



Reminder!

Members can receive referral commission from affiliate link registrations as well as from direct test taker registrations.

Membership Review

To maintain consistently high levels of engagement with our partners, Paragon will work with members on an annual basis to ensure the program is working for all parties involved. This annual membership review includes:

- ✔ Adherence to Branding Guidelines
- ✔ Customer Service Satisfaction survey from Paragon
- ✔ Sustained flow of referrals/registered test takers from affiliate links
- ✔ Applicants who provide a preparation program must complete an IPP audit

To learn more about the CAEL CE Network, contact memberteam@paragontesting.ca.

Contact Us

Visit cael.ca to learn more about Canada's leading academic English language test, or email info@cael.ca for more information.

Follow [@CAELTest](https://twitter.com/CAELTest) on social media

